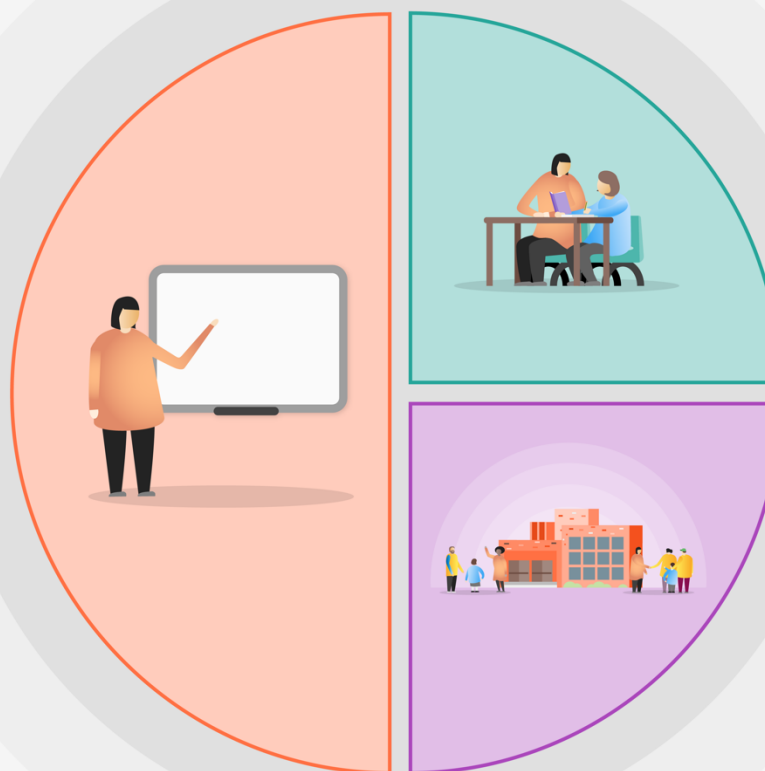


# 1 Teaching

- Ensure that every student receives the very best teaching and learning in the classroom, through the introduction and implementation of the STRETCH model
- Implementation of a coaching culture to improve the quality of teaching, learning and assessment in the classroom
- All teachers are aware of the PP students they teach, using knowledge of their needs to plan and implement strategies to improve their outcomes
- Regular student progress meetings so teachers are aware of the progress of their PP students and able to make plans to intervene where necessary
- PP students are represented and considered throughout the school through effective leadership and membership of student voice groups
- Vocabulary building programme in tutor time and Accelerated Reader to build the literacy of PP students
- Reduction of low level disruption in lessons through the BFL system



# 2 Targeted academic support

- Small group weekly tuition sessions in English and Maths for KS3 and KS4 PP students
- Sparx software to improve the progress of PP students in Maths
- Structured mentoring and workshop programmes to improve engagement, confidence and attainment
- Metacognition and revision skills sessions
- Other targeted intervention sessions tailored to individual needs

# 3 Wider strategies

- Discounted trips and academic materials for PP students to ensure every student has the same opportunities
- Increasing engagement with parents
- Ensure that all DS students have the correct equipment to allow them to learn effectively in lessons
- Use of PSHE time to raise aspirations
- Access to music tuition to encourage participation in extracurricular music lessons