

Geography GCSE at Teignmouth Community School...

AQA





How is Geography assessed?



Paper One: Living with the Physical Environment

- 3.1.1 The challenge of natural hazards
- 3.1.2 The Living World
- 3.1.3 Physical Landscapes in the UK

✂ 35%

✓ 88 marks

🕒 1 hour 30 minutes



Paper Two: Challenges in the Human Environment

- 3.2.1 Urban Issues and Challenges
- 3.2.2 The Changing Economic World
- 3.2.3 The challenge of Resource Management

✂ 35%

✓ 88 marks

🕒 1 hour 30 minutes



Paper Three: Geographical Applications

- 3.3.1 Issue Evaluation
- 3.2.2 Fieldwork

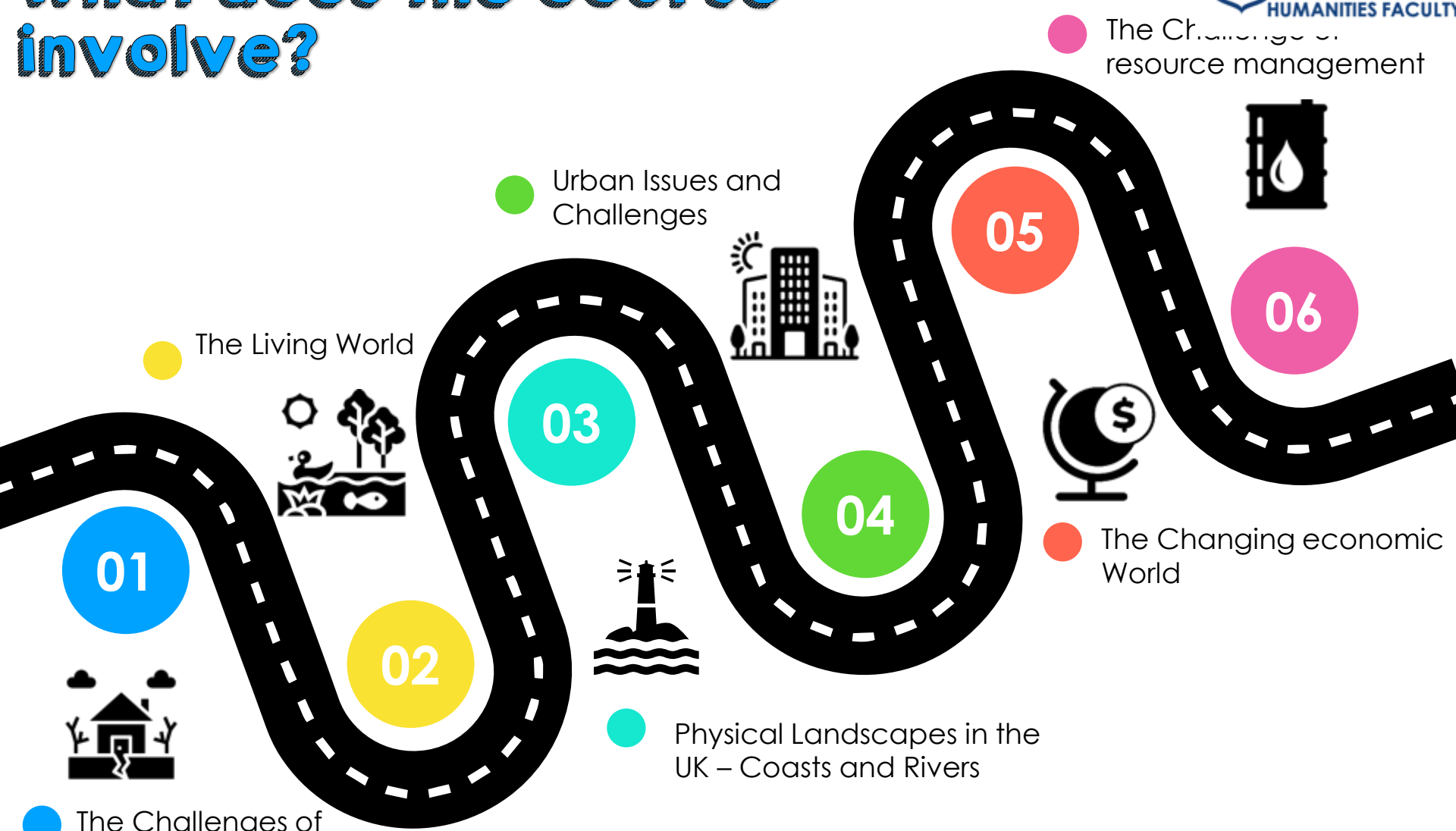
✂ 30%

✓ 76 marks

🕒 1 hour 30 minutes



What does the course involve?



01 The Challenges of Natural Hazards

02 The Living World

03 Urban Issues and Challenges

04 Physical Landscapes in the UK – Coasts and Rivers

05 The Challenges of resource management

06 The Changing economic World

History GCSE at Teignmouth Community School...

Edexcel





Why Study History?

0:01 / 2:10



How is History assessed?



Paper One:

Thematic study and
Historic Environment

Thematic: Crime and
punishment in Britain,
c1000–present

Historic Environment:
Whitechapel c1870–
c1900: crime, policing
and the inner city

✂ 30%

✓ 52 marks

🕒 1 hour 15 minutes



Paper Two:

Period and British
depth Study

Period: Superpower
relations and the Cold
War, 1941–91

British Depth Study:
Elizabethan England

✂ 40%

✓ 64 marks

🕒 1 hour 45 minutes



Paper Three:

Modern Depth Study

**Weimar and Nazi
Germany, 1918–39**

✂ 30%

✓ 52 marks

🕒 1 hour 20 minutes

What does the course involve?

Crime and Punishment

- Crime and punishment starting in the Medieval Period stretching until the Modern Day
- Whitechapel, c1870–c1900: crime, policing and the inner city

01

02

03

04

Elizabethan England

- Role of religion
- Changes to Elizabeth's home
- Elizabethan society

Superpowers and Cold War

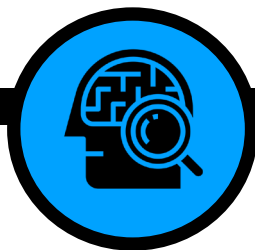
- Origins of Cold War
- Cold War crises, 1958-70
- End of Cold War, 1970-91

Weimar and Nazi Germany

- Weimar Republic
- Hitler's rise to power
- Nazi control
- Life in Nazi Germany

Why study Humanities?

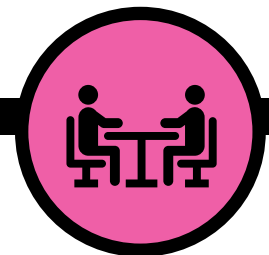
Interesting



Improves literacy



Discussion of real world issues



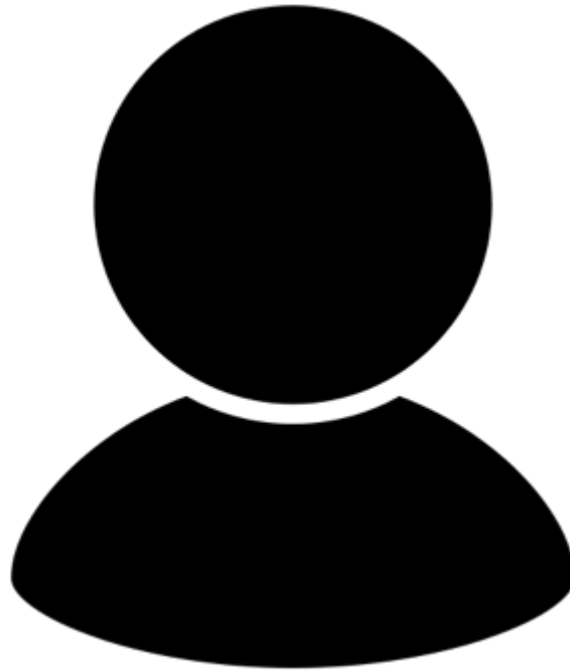
Develops communication



Develops critical thinking



Where can this lead?



Religious Studies GCSE at Teignmouth Community School...

Eduqas



How is Religious studies assessed?



Paper One: Beliefs and Practices in Islam

Islamic beliefs:

- The foundations of faith
- The nature of God
- Risalah: Prophethood
- Malaikah: Angels
- Akirah: the afterlife

Islamic Practices:

- The Sunni foundations of faith
- Jihad
- Festivals
- Shia Islam

✂ 25%

✓ 60 marks

🕒 1 hour



Paper Two: Beliefs and Practices in Christianity

Christian beliefs

- The nature of God
- Creation
- Jesus Christ
- Salvation
- The afterlife

Christian practices

- Forms of worship
- The sacraments
- Pilgrimages and celebrations
- Christianity in Britain
- The worldwide Church

✂ 25%

✓ 60 marks

🕒 1 hour



Paper Three: Philosophical Issues

- 1: Relationships
- 2: Life and Death
- 3: Good and Evil
- 4: Human rights

✂ 50%

✓ 120 marks

🕒 2 hours

What does the course involve?

